

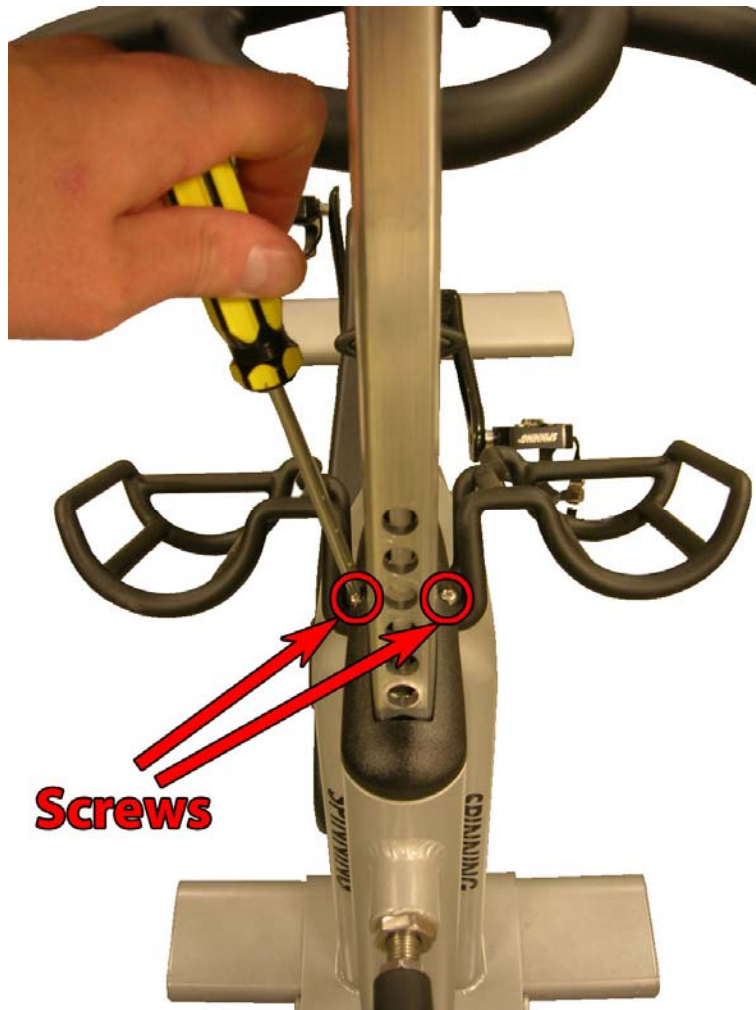
Display Cables Replacement: Power, Coax, RPM

eSpinner

Required tools/parts:

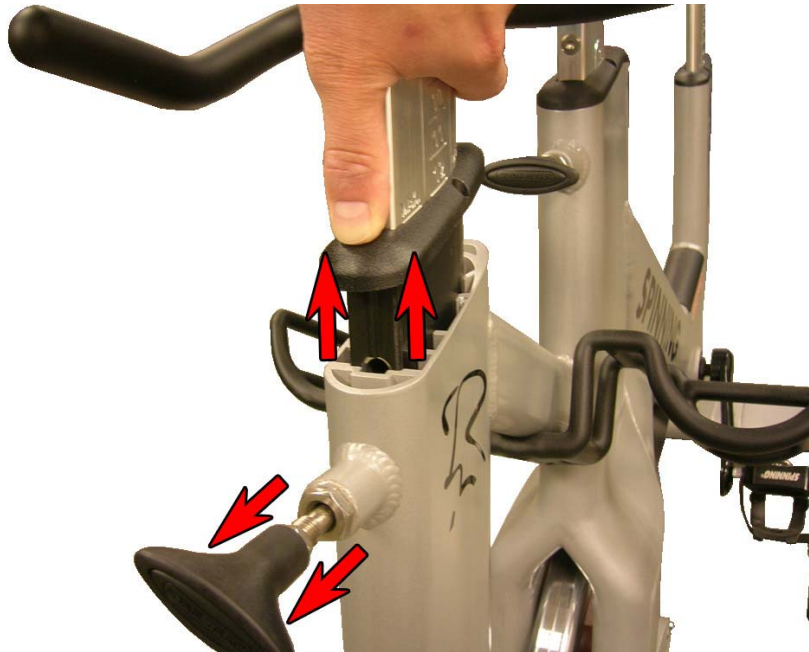
- 3/16 Allen key
- Philips-head screwdriver
- Power Cable (PN: 740-6971)
- Coax Cable (PN: 740-6976)
- RPM Cable (PN: 740-6964)

1. Turn the unit off.
2. Lift the display all the way to the top position and remove the 2 screws that hold the sleeve inside the frame.



3. Pull the pop pin and lift the complete display post upwards until the cables that run inside the frame can be reached.

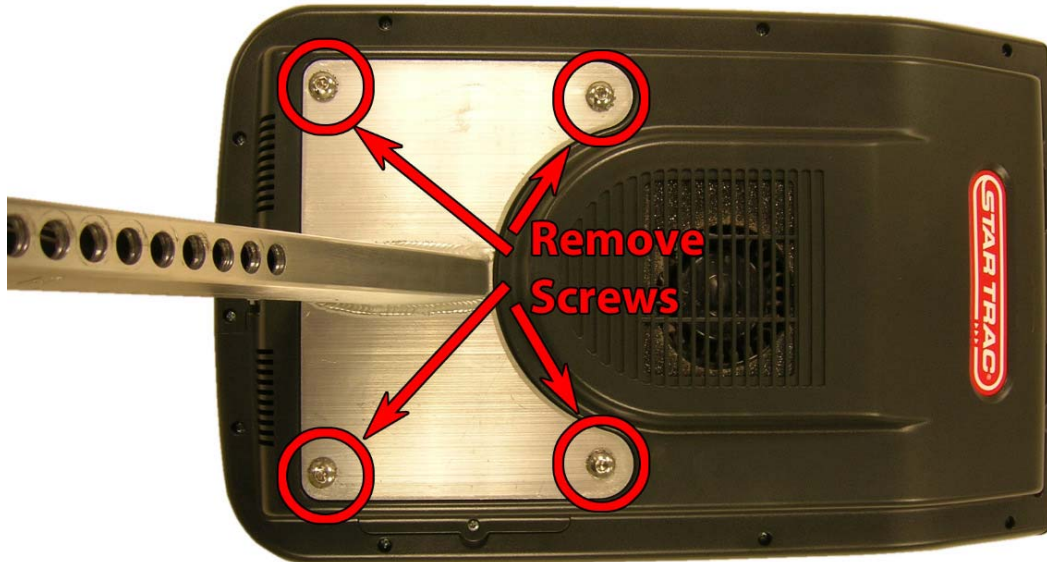
Note: It is recommended to have another person help to hold the display. The screen is awkward and may fall and break.



4. Disconnect all cables and place the console on a safe surface.



5. Remove the 4 screws that attach the display post to the display.



6. Carefully remove the display post taking extra care with the cables that run through the inside of the display post.

